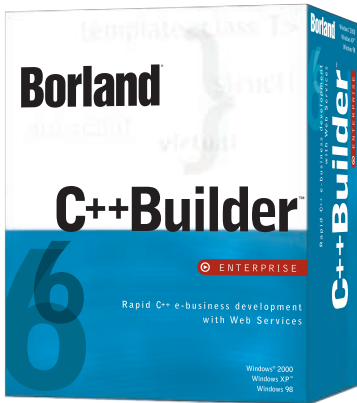


# Borland®



## Rapid C++ e-business development with Web Services

### Take C++ development to a new level

Borland® C++Builder™ 6 provides developers with a robust, high-productivity e-business development environment to create highly efficient applications that support new and emerging Web Services. The BizSnap™ Web Services development platform enables simplified business-to-business integration by easily creating industry-standard SOAP/XML Web Services and connections. Increase the power, speed, and efficiency of your development process with WebSnap,™ the component-based Web application development platform. With DataSnap,™ build powerful data-access middleware solutions that integrate with many business processes and many business partners.

### Deliver complete business-to-business Web Services integration

The BizSnap Web Services development platform simplifies business-to-business integration by easily creating SOAP/XML Web Services and connections that seamlessly integrate your business with the applications of your customers and suppliers. C++Builder lets you exchange, transform, and manipulate XML documents and create applications that communicate directly with trading partners who run their operations on standards-based, Web Services-enabled platforms such as .Net™ and BizTalk™ from Microsoft and ONE from Sun Microsystems.

### Bring power and speed to Web application development

WebSnap delivers the power and speed of component-based RAD (Rapid Application Development) to your e-business Web application development, increasing the efficiency of your team and the reliability of your code. The Web application debugger enables you to find and fix bugs, optimize performance, and produce reliable code quickly and easily. Integrate WebSnap applications into corporate sites and Web portals developed with popular HTML site-development tools such as Microsoft® FrontPage® and Macromedia® Dreamweaver.® Leverage today's extensive pool of script code and skills with server-side scripting for JavaScript,® VBScript, and more.

### Build high-performance Web Services-enabled middleware

DataSnap builds on the high productivity of C++Builder to deliver enterprise-class, database-driven applications that scale as your volume of transactions and number of users grow. DataSnap leverages distributed computing standards such as SOAP/XML, COM, TCP/IP, and CORBA® to smooth the integration of your existing enterprise databases, applications, and objects with your e-business applications. Using its high-performance distributed middleware,

### ▶ Key features

- Simplify business-to-business integration with Web Services
- Increase the power and speed of Web application development
- Build high-performance, Web Services-enabled middleware
- Take advantage of industry-standard compliance with SOAP, XML, WSDL, and XSL protocols
- Build cross-platform-ready applications for the Windows® and Linux® operating systems
- Boost productivity with a high-performance 32-bit native code compiler
- Leverage support for IBM® DB2® and Informix®, Oracle®, Sybase®, MySQL™, dBASE®, Paradox®, and Borland® InterBase®

# C++Builder™

DataSnap optimizes valuable RDBMS server connections and bandwidth by centralizing data access and updates among e-business processes and applications. DataSnap supports multiple C++Builder data-access connectivity solutions with high-performance access to IBM® DB2® and Informix®, Oracle®, Sybase®, Microsoft® SQL Server™, MySQL™, Microsoft Access, and Borland InterBase.®

## Create cross-platform-ready solutions

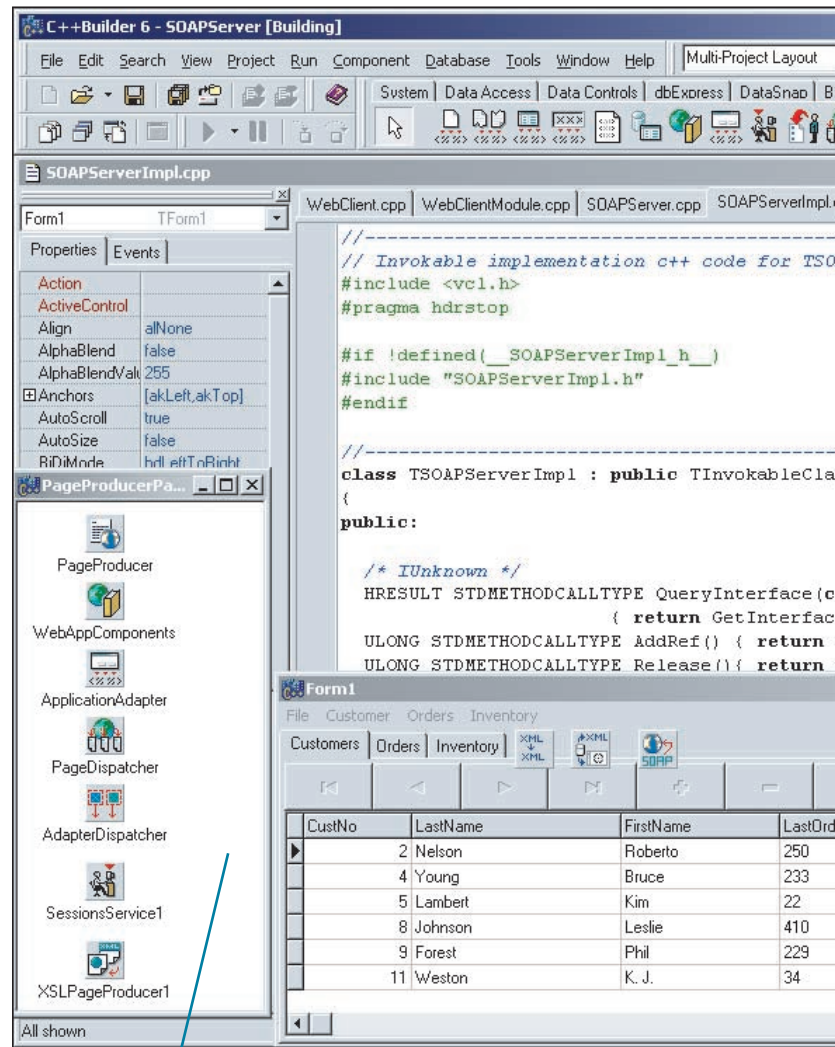
Unleash the power of component-based development with the Borland Component Library for Cross-platform development (CLX™). Designed to compile and run on multiple platforms, CLX applications require a minimum number of changes between Windows® and Linux® ports. Applications built with CLX are source-code compatible with currently planned Borland C++ products for the Linux platform. The NetCLX™ Internet components enable you to develop cross-platform Apache™, Microsoft IIS, and Netscape® Web Server applications using native extensions or CGI scripting.

## Quickly connect to your corporate databases

Integrate corporate data into your applications easily with dbGo™ for ADO, dbExpress™, or BDE high-speed database drivers for popular databases such as DB2, Informix, Oracle, Sybase, Microsoft SQL Server, MySQL, Access, Paradox®, and InterBase. Use the rich set of data-aware GUI components in C++Builder to quickly prototype your data-centric applications. Optimize the performance, scalability, and responsiveness of your database applications with the SQL Monitor and other debugging components.

## Implement enterprise-class e-business applications

C++Builder now integrates with Borland® Enterprise Server, allowing you to meet the rigorous demands of global e-business customers. C++Builder quickly and efficiently delivers high-performance thin/rich GUI and WebSnap browser clients to Borland Enterprise Server applications. Bridge Borland Enterprise Server applications for Enterprise JavaBeans™ (EJB™) across the Internet and directly to your customers and suppliers using the BizSnap, WebSnap, and DataSnap e-business tools and SOAP/XML Web Services.



WebSnap delivers the power and speed of component-based Rapid Application Development (RAD) to your e-business Web application development.

## Accelerate time-to-market with RAD

C++Builder provides tools specifically designed to help developers increase productivity and reduce development cycle time. The complete Integrated Development Environment (IDE) of C++Builder includes the ANSI/ISO-compliant compiler, fully integrated Form Designer, extensive component framework, Object Inspector™, Project Manager, and debugger.

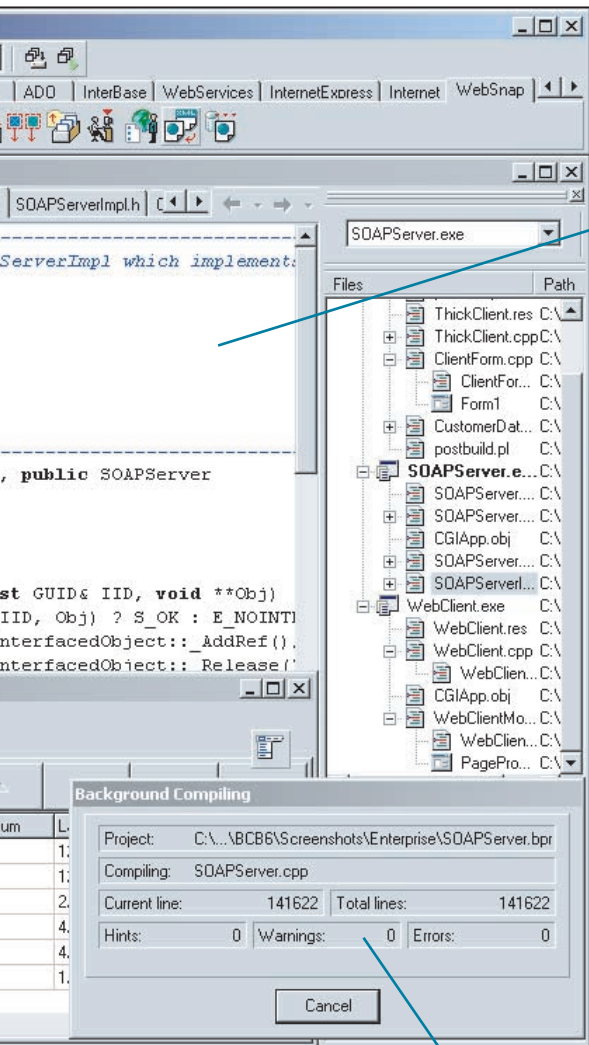
## Diagnose your errors on the spot with CodeGuard™

CodeGuard lets you easily locate and diagnose memory and resource leaks and errors, on the spot. CodeGuard allocation

monitoring enables you to automatically pinpoint memory leakage in your code, including pointer arithmetic bugs. Just-in-time (JIT) debugging with on-the-fly JIT multi-debugger integration helps you to solve runtime defects as they occur.

## Gain control of the development and deployment of large projects

Obtain high flexibility with the new open-architecture, advanced multitarget Project Manager. Project Manager gives you full control of your sources, with file-order dependency views and per-node compile, link, and debug options, as well as custom tool support. Manage your projects efficiently with support for standalone C and C++ projects.



C++Builder automatically handles SOAP, XML, and WSDL implementations, enabling developers to focus on application code rather than infrastructure.

Enhanced ANSI/ISO C++ compiler adheres closely to industry standards while taking advantage of the award-winning Borland IDE.

## Simplify distributed application development with fully integrated Borland VisiBroker® for C++ and CORBA development

C++Builder is the only C++ compiler that seamlessly integrates both COM and CORBA applications into the development environment, simplifying complex distributed object development. You can easily build and debug high-performance CORBA- and COM-based C++ server objects that are interoperable with Windows, UNIX®, and Java™ objects and client applications. Using the included

development license for VisiBroker 4.5, developers can utilize the world's leading ORB™ solution and harness server objects from across the enterprise.

## Build an optimized turnkey system with Borland InterBase

With C++Builder and InterBase, high-productivity, high-performance development is combined with a high-performance, cross-platform, SQL standards-compliant relational database that combines ease of use, low maintenance costs, and enterprise power.

## Borland C++Builder

### C++Builder 6 Enterprise

C++Builder 6 Enterprise provides robust C++ e-business development with support for both the creation and consumption of Web Services. Create cross-platform-ready solutions with Borland CLX, the Component Library for Cross-platform development, and deploy to Linux with currently planned Borland C++ products for the Linux platform. Gain control of development and deployment of large projects with the new open-architecture Project Manager and internal make system.

### C++Builder 6 Professional

C++Builder 6 Professional delivers a highly productive C++ visual development environment. Use the power and flexibility of SOAP and XML to easily integrate Web Services into client-side applications, dramatically enhancing functionality with minimal code. With CLX, you can create cross-platform-ready solutions and deploy to Linux with currently planned Borland C++ products for the Linux platform.

### C++Builder 6 Personal

C++Builder 6 Personal enables you to learn C++ development with ease. It contains the tools you need to begin developing for the Windows platform in C++, including true drag-and-drop visual development, wizards, sample applications, and a tutorial.

## Minimum system requirements (C++Builder 6 Enterprise)

- Intel® Pentium® II/400 MHz or compatible
- Microsoft® Windows® 98, 2000 (SP2), or XP
- 128 MB RAM (256 MB recommended)
- 750 MB hard disk space (full install)
- CD-ROM drive
- SVGA or higher resolution monitor (800x600, 256 color)
- Mouse or other pointing device

## Borland Professional Services

Ensure that the investments you make in Borland technology meet your business objectives. Among other benefits, Borland technologies and services drastically reduce time to deployment. The Borland Professional Services organization helps focus the full strength and value of our specialized knowledge and experience onto the challenges facing your business. For more information, please visit [www.borland.com](http://www.borland.com).

## Borland® C++Builder™ 6 features

	Personal	Professional	Enterprise
<b>World-class RAD development</b>			
Real C++ visual development with Borland® Two-Way-Tools™ for building applications	✓	✓	✓
<b>Enhanced</b> Improved ANSI/ISO C++ conformance with support for STLPort	✓	✓	✓
Easily build and use Windows® COM, COM+, ActiveX®, and automation objects		✓	✓
<b>BizSnap™ e-business development platform with Web Services</b>			
<b>New</b> Build client-side applications that consume W3C-compliant Web Services using SOAP, XML, WSDL, and more		✓	✓
<b>New</b> Build server-side W3C-compliant Web Services using SOAP, XML, WSDL, and more			✓
<b>New</b> Native XML bindings radically simplify XML programming: XML documents become native objects			✓
<b>New</b> XML schema transform tools and components: produce transforms and train your application to recognize new XML formats to exchange data with business partners			✓
<b>WebSnap™ complete Web application development platform</b>			
<b>New</b> WebSnap components for meeting a wide array of Web application needs			✓
<b>New</b> Server-side scripting with JavaScript®, VBScript, or ActiveScript languages			✓
<b>DataSnap™ e-business data-access middleware services</b>			
<b>New</b> Web Services-enabled, scalable database middleware for GUI, Web, and Web Services clients—while maintaining backwards-compatibility with earlier versions of DataSnap			✓
<b>New</b> Web Services-enable enterprise-class databases with SOAP and XML: Oracle®, Microsoft® SQL Server,™ IBM® DB2® and Informix®, Borland InterBase®, and more			✓
<b>VCL (Visual Component Library)</b>			
VCL native components for rapid application development	85+	225+	300+
<b>New</b> Runtime user-configurable ActionBands™ for adaptable, modern Windows 2000-style GUIs		✓	✓
<b>New Borland CLX™ (Component Library for Cross-platform development) on Windows/Linux®*</b>			
More than 165 BaseCLX,™ VisualCLX,™ DataCLX,™ and NetCLX™ components for single-source cross-platform applications*		✓	✓
<b>New Tools server for advanced project management that can be customized</b>			
Install and invoke external tools and utilities such as batch files, Perl scripts, compilers, and other systems as part of your build process		✓	✓
Design your own build orders and include customized substitutions for build tools		✓	✓
<b>Enterprise development</b>			
Enhanced CORBA® client and server wizards for Borland VisiBroker® 4.5			✓
<b>High-performance database development</b>			
Local database drivers for Paradox®, dBASE®, FoxPro®, and Microsoft Access		✓	✓
dbExpress™ drivers for InterBase and MySQL™		✓	✓
dbExpress drivers for Oracle and DB2			✓
BDE SQL links for Oracle, Microsoft SQL Server, Informix, Sybase®, and InterBase			✓
dbGo™ for ADO 2.5 direct access to ADO-compliant data sets, from office applications to RDBMS		✓	✓
<b>High-performance native Windows applications</b>			
Easily create reusable dynamically linked libraries (.dll), COM controls (.ocx), and standalone executables	✓	✓	✓
Commercial development license for professional software sales		✓	✓
<b>Documentation, examples, and online help</b>			
Comprehensive online and printed documentation for quick reference	✓	✓	✓

\*Develop cross-platform—ready applications for currently planned Borland C++ products for the Linux platform.

# Borland®

www.borland.com

Made in Borland® Copyright © 2002 Borland Software Corporation. All rights reserved. All Borland brand and product names are trademarks or registered trademarks of Borland Software Corporation in the United States and other countries. Corporate Headquarters: 100 Enterprise Way, Scotts Valley, CA 95066-3249 • 831-431-1000 • www.borland.com • Offices in: Australia, Brazil, Canada, China, Czech Republic, France, Germany, Hong Kong, Hungary, Ireland, Japan, Korea, the Netherlands, New Zealand, Russia, Singapore, Sweden, Taiwan, the United Kingdom, and the United States. Microsoft, Windows, and other Microsoft product names are trademarks or registered trademarks of Microsoft Corporation in the U.S. and other countries. All other marks are the property of their respective owners. • 11425.3

data sheet